

■ Use

METALO® is a **decorative metallic paint for indoor and outdoor decoration**. METALO® **metallic paint** is in powder form. Once mixed with water it is applied and forms **metal finishes**, free of VOC (volatile organic compounds) on any type of surface (wood, metal, ceramic, glass, plastic, cloth etc). METALO® **metallic paint** is easy to use and will produce **decorative metal finishes** on walls or furniture.

METALO® **metallic paint** enables you to create a variety of **metal finishes** depending on the tool you use to apply it (spatula, brush, spraying etc.)

METALO® **metallic paint** is available in zinc, iron, bronze, copper, pewter or brass finishes. The METALO® **metallic paint** powders can be mixed together and superimposed over each other (**except for the METALO® metallic paint ZINC powder finish**).

- Composition

Metallic powder, special water-based glue and mineral aggregate.

- Features

Simple to use. Application on any type of surface. Excellent adhesion. Wide choice of **metal finishes**. Excellent bending resistance. **VOC free metal finishes**.

UE Classification: VOC compliant.

■ Application

- Surface preparation

Indoor and outdoor surfaces should be in conformity with the current standards in force. The surfaces should be homogeneously absorbent, sound, clean, dry, non-friable and deprived of salts, moisture and moulds. Very absorbent or very dusty surfaces should first be given a primer coat of our water-primer (IMPRESSION ACRYLIQUE or IMPRESSION ACRYLIQUE COUVRANTE).

- Mixing

Mix a ratio of 4 volumes of METALO® **metallic paint** with 1 volume of water by hand using a brush. Use a mixer for larger quantities. Mix the powder well before adding the water. For exterior use a water-based resin must be added to METALO® **metallic paint** (check with one of our technicians). Adjust the quantity of water or resin depending on the thickness of the paste required. If METALO® **metallic paint** is to be applied using a spatula, the paste should be thicker than if sprayed or brushed on. Mix thoroughly and leave for 5 minutes. Mix again before applying METALO® **metallic paint**. Mix frequently to ensure the powder remains in suspension and does not sink to the bottom of the pot.

- Application

Apply using a brush, a spatula, a finishing trowel or by spraying. According to the thickness of the paste, one coat can be sufficient but a better finish will be often obtained by applying a second coat when the first coat has dried fully. A variety of **metal finishes** can be obtained depending on the tool used and on your imagination. It is also possible to purposely oxidize the METALO® **metallic paint** powders by applying a solution of 5% hydrochloric acid in water (*taking the necessary precautions, never pour the water on the acid but still pour the acid into the water*) or with other products (check with one of our technicians).

- Drying

METALO® **metallic paint** dries in approximately one hour depending on surface absorbance and air humidity.

- Coverage

0.5 to 2 kg / m² per coat, depending on the surface, the desired effect and the tool used.

- Polishing

The metallic finish appears after manual or mechanical polishing. Before polishing, test the surface to ensure that METALO® **metallic paint** is sufficiently hard and dry. **Once it has dried wait at least 6 hours before polishing METALO® metallic paint.**

Use fine steel wool or an orbital sander with a 120, 280, 400 or 600 grain. Clean the surface thoroughly using a cloth or vacuum cleaner.

- Protection

All surfaces to which METALO® **metallic paint** powders have been applied **must be protected** with a compatible varnish or wax (check with one of our technicians).

- Practical advice

Clean all tools with water immediately after use.

Apply and store at a temperature of +5°C to +30°C. Do not use METALO® **metallic paint** on hot or damp surfaces.

Protect all surrounding areas or clean immediately in the case of projections.

Do not put any liquid on a METALO® **metallic paint** covered surface before it has been appropriately protected.

METALO® **metallic paint** surfaces should be checked regularly to see if they require a new coat of varnish or wax.

■ Health Caution

METALO® **metallic paint** may provoke irritation. Avoid contact with eyes and skin. Wear an appropriate mask and gloves. In the case of contact with the eyes, rinse well with clean water and consult a doctor if any symptoms persist. Keep out of the reach of children. Do not dispose of any remaining metallic powder directly into the environment.

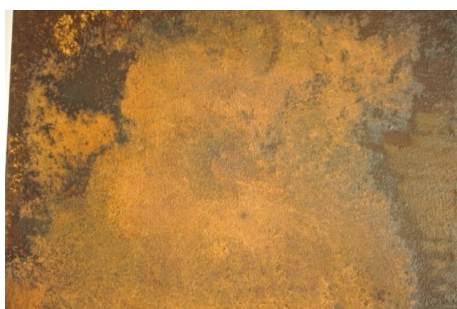
■ Storage

METALO® **metallic paint** will keep for 12 months in its original closed packaging and in a frost-free, dry area away from high temperatures. Any mixed powder must be used rapidly. We recommend that you only mix the amount required for the surface you wish to cover.

■ Packaging

METALO® **metallic paint** comes in recyclable plastic pots of 0.5 kg and 1 kg.

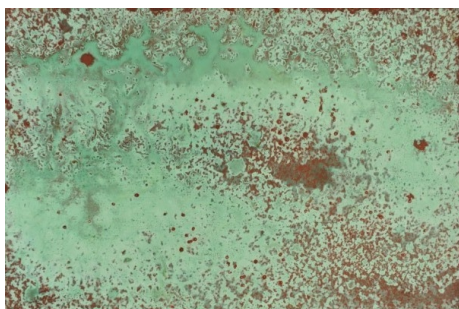
The information contained in this sheet are the expression of our knowledge and of test results. They can in no case be regarded as bringing a guarantee, or engaging our responsibility in the event of defective application. We recommend making a sample.



RUSTY (OXIDIZED IRON)



PEWTER



VERDIGRIS (OXIDIZED COPPER, BRONZE OR BRASS)



ZINC



BRONZE



RUSTY AND VERDIGRIS PLASTER JARS



COPPER



PEWTER BOWL



BRASS



COLOR CHART